

Using Multiple Studios to Fit Your Needs and Budget

Recording engineer Mike Davidson has what could be a perfect business model for the time (during a recession) and the place (Boston's indie music scene). Davidson says he likes to work with bands who are looking to take that next step "creatively, artistically and technically," but may not have the money to do so.

Mike Davidson Recording offers services on an a la carte basis to trim costs, which involves networking by any means he sees fit and using multiple locations.

Zippah Recording Studio in Brighton serves as his home base, and there's good reason for that.

"He has a great skill set as a producer and an engineer. And he uses what we've worked on here for 20 years, what we've cultivated to a point where it's ultimately more useful to someone who knows what to do with it," Zippah owner Brian Charles says. "And [Mike] is one of those guys."

Book studio time with MDR and there's a 90 percent chance you'll end up at Zippah. But Davidson also records at the Moontower, by Porter Square, and Squid Hell in Jamaica Plain.

Davidson's unique approach to recording reflects his dedication to bringing artists' ideas to fruition. "If the musician is the driver, I'm the map," he says. For groups that don't have enough money to spend all of their time at Zippah, Davidson says he'll offer them time to record drums and bass there, for example, and then they can record guitar somewhere cheaper. His networking with multiple studios is a win-win for the band and

MDR, he says. "It's a nice way to open the doors for a wider selection of bands."

Ideally, Davidson likes to record at Zippah because it offers some premier equipment. The studio has floor-to-ceiling analog outboard gear, individual pieces that can be connected to make any signal chain desired.

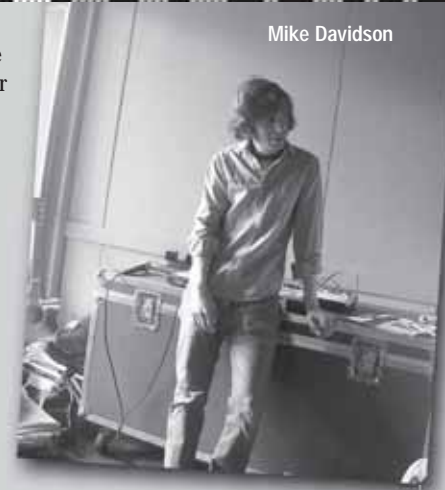
And they have an eight-foot reverb plate in the main live room – the vintage way to do it – the sound of a lot of old Motown hits. Zippah prides themselves on their analog options, but they have the digital side too.

Other studio pieces of note are an authentic Mellotron, made famous by The Beatles in "Strawberry Fields," which Charles calls "the first sampler," noting the analog tape strips used in the instrument. And then there's the U47 Neumann mic, which both Davidson and Charles agree is the creme de creme of microphones. "The Neumann is like a really, really, good, full-bodied beer," Davidson says. "Lesser mics are like PBR."

Davidson recently worked with Mieka Pauley, recording a good portion of her latest record, *Elija Drop Your Gun*. The roving engineer/producer has also pulled together studio time with such artists as Johanna Kunin, based out of Seattle, and hip-hop star Ghostface Killah.

-Mike Del Rosso

www.mikedavidsonrecording.com



Mike Davidson

VENUE PROFILE

P.A.'s Lounge

From the outside, P.A.'s Lounge looks ordinary, resembling that of a local neighborhood bar. However, it is what takes place within its unassuming walls that will impress its visitors. P.A.'s Lounge is known for both local and out-of-town music, often of an offbeat indie style. It books musical acts with genres ranging from indie and rock, all the way to noise and psych. What makes this venue unique is its musically beneficial layout.



The venue is composed of two rooms. The first is the bar: casual, small and fully equipped with a friendly staff and

cheap beer. The second room is the performance room. It is equal in size to the bar and is a simple room with a low ceiling. The performance area is much smaller than one would picture in a dance club, yet its size makes for intimate performances. The separation of the bar from the music also gives listeners the option of taking a break from the action. P.A.'s Lounge's laid-back feel, dual room space and eclectic mix of performers make an ideal place for shows.

Capacity: 150 (18+)

Stage Size: PA's has had up to 12 people on stage at a time
Backline/Gear: Bands must bring their own backline
Alumni: Man Man, David Thomas Broughton, Jens Lekman, Gil Mantera's Party Dream, Casiotone for the Painfully Alone and Elf Power

Booking: Jen Guthrie at booking@paslounge.com

Booking Policy: Strictly original acts chosen based upon MySpace credibility and history with the club. Send website or MySpace links to booking@paslounge.com. Do not attach MP3s to the email. Sending CDs or press kits to address below.

Music Schedule:

five days a week, closed Sundays in the summer

345 Somerville Ave. | Somerville, MA | 617-776-1557
www.paslounge.com